



## *Innovative Onsite Wastewater Products and Services*

**Front Range Office:** P.O. Box 1411, Conifer, CO 80433  
Office: (303) 838-0611 Fax: (303) 838-4231

**Western Slope Office:** P.O. Box 4232, Basalt, CO 81621  
Office: (970) 963-3742 Fax: (970) 963-3187

**New Mexico Office:** P.O. Box 3690, Corrales, NM 87048  
Office: (505) 792-1200 Fax: (505) 792-8686

[www.scgenterprises.com](http://www.scgenterprises.com)

# Mount Elbert Mobile Home Park

*Leadville, Colorado*

*Alternative  
Wastewater  
Systems*

*Product  
Distribution*

*Product  
Support*

*Installation  
Assistance*

*Onsite  
Management  
Services*

*Maintenance  
Contracts*

*Effluent  
Sampling*

## **Project Summary:**

**Installation / Start-up Date:** June 2002

**Description:** Recirculating Sand Filter

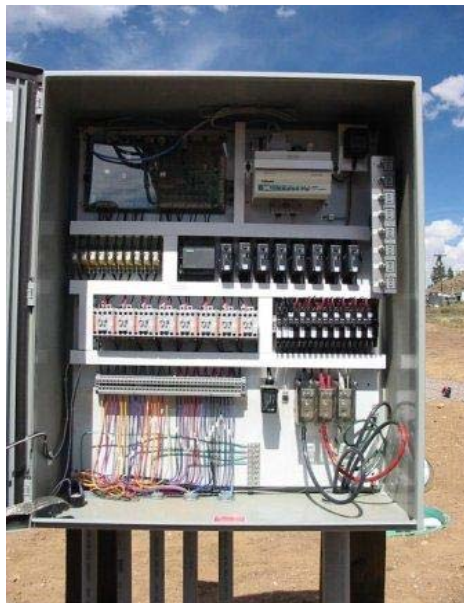
**Design Flow:** 10,000 GPD

**Project Engineer:** J.W. Knudsen Engineering

**Installer:** Satterfield Construction

**Operator:** Shawn Griffith

**Permitting Authority:** CO Dept. of Health



## **System Summary:**

### **Collection System:**

- Small diameter effluent sewer with two Septic Tank Effluent Pumping (STEP) system connections.

### **Treatment System:**

- Two 10,000-gallon concrete septic tanks
- 20,000-gallon Xerxes® recirculation tank
- 2,000 square foot sand filter
- 1,500-gallon drain field dosing tank
- Orenco® TCOM telemetry control panel

### **Dispersal System:**

- Subsurface drain fields

*Dedicated to Improving the Performance of Onsite Wastewater Systems*